

Blue Lake Springs Development Co.

Blue Lake Springs Development Co.

**NOTES**

1. Building set-back from streets are 20' in front and 10' on side unless otherwise noted.
2. Easements for public utilities are shown thus  $\equiv$  and are 5' on each side of lot line unless otherwise noted. Ped. + P.U.E. denotes Pedestrian path + Public Utility Easement.
3. All lot corners and angle points on lot lines set with 1/2" diameter iron pins 24" long except as noted in Note 4 below.
4. Monuments set are shown thus  $\text{---}$  and are 3/4" diameter iron pins, 30" long with brass tag attached and stamped "RCE 10892". Monuments found are shown thus  $\text{---}$  and are 3/4" iron pins unless otherwise noted.
5. Basis of bearing is the southeasterly line of Blue Lake Springs, Unit No. 9.
6. This subdivision is comprised of 184 lots and contains 91.74 Acres.
7. Sewage set-back shall be equal to building set-back or shall be three times the vertical cut-bank height in front of the lot as measured from top of cut, whichever is greater.

CALAVERAS TITLE COMPANY  
P. O. BOX 1148  
SAN ANDREAS, CALIFORNIA 95249

SUBDIVISION MAP OF TRACT NO. 159-B  
**BLUE LAKE SPRINGS  
UNIT NO. 10**

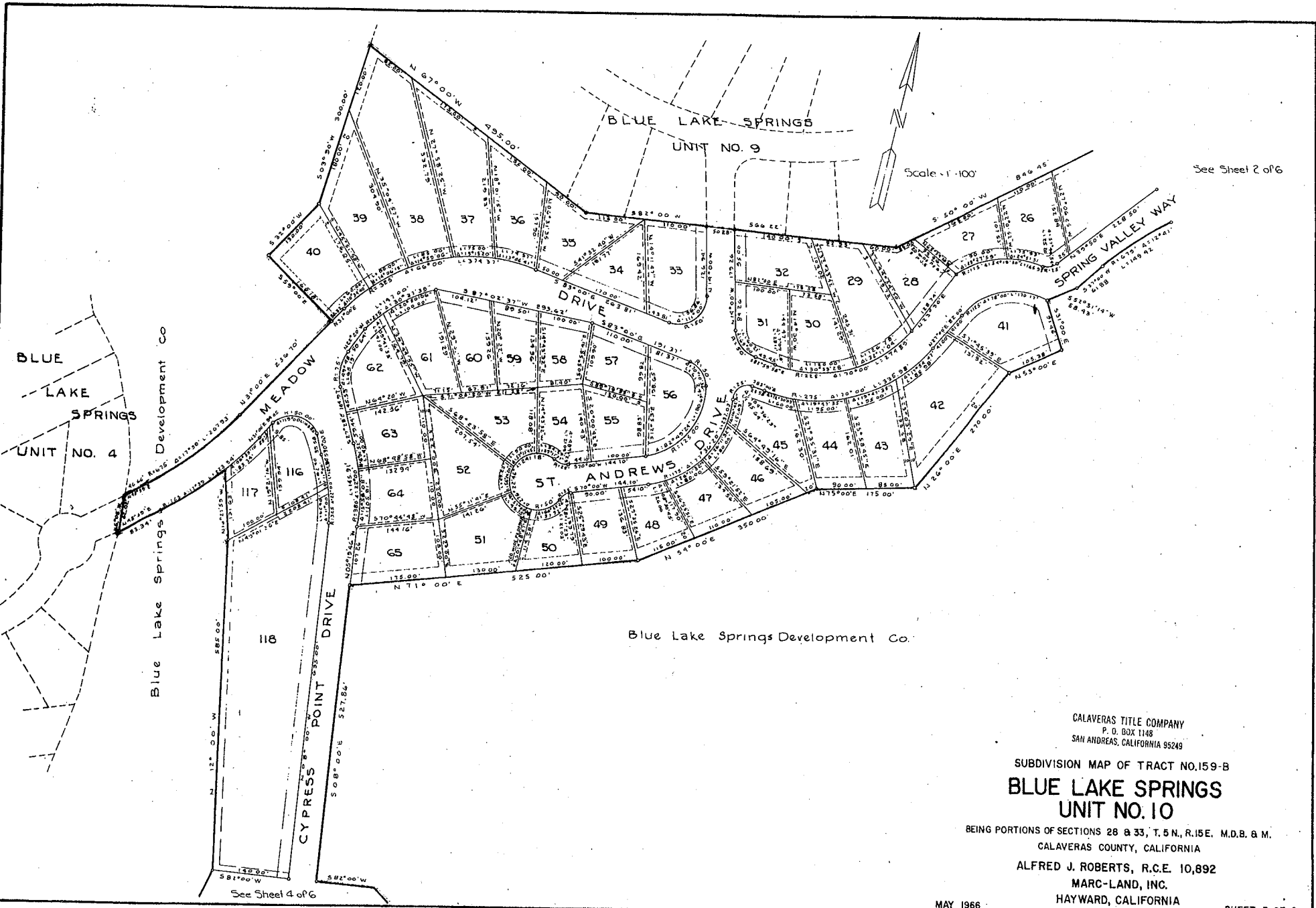
BEING PORTIONS OF SECTIONS 28 & 33, T.5 N., R.15 E. M.D.B. & M.  
CALAVERAS COUNTY, CALIFORNIA

ALFRED J. ROBERTS, R.C.E. 10,892  
MARC-LAND, INC.  
HAYWARD, CALIFORNIA

MAY 1966

SHEET 2 OF 6

108-A



See Sheet 2 of 6

BLUE LAKE SPRINGS UNIT NO. 4  
 Blue Lake Springs Development Co.  
 Blue Lake Springs

Blue Lake Springs Development Co.

CALAVERAS TITLE COMPANY  
 P. O. BOX 1148  
 SAN ANDREAS, CALIFORNIA 95249

SUBDIVISION MAP OF TRACT NO. 159-B  
**BLUE LAKE SPRINGS  
 UNIT NO. 10**  
 BEING PORTIONS OF SECTIONS 28 & 33, T. 5 N., R. 15 E., M. D. B. & M.  
 CALAVERAS COUNTY, CALIFORNIA  
 ALFRED J. ROBERTS, R.C.E. 10,892  
 MARC-LAND, INC.  
 HAYWARD, CALIFORNIA

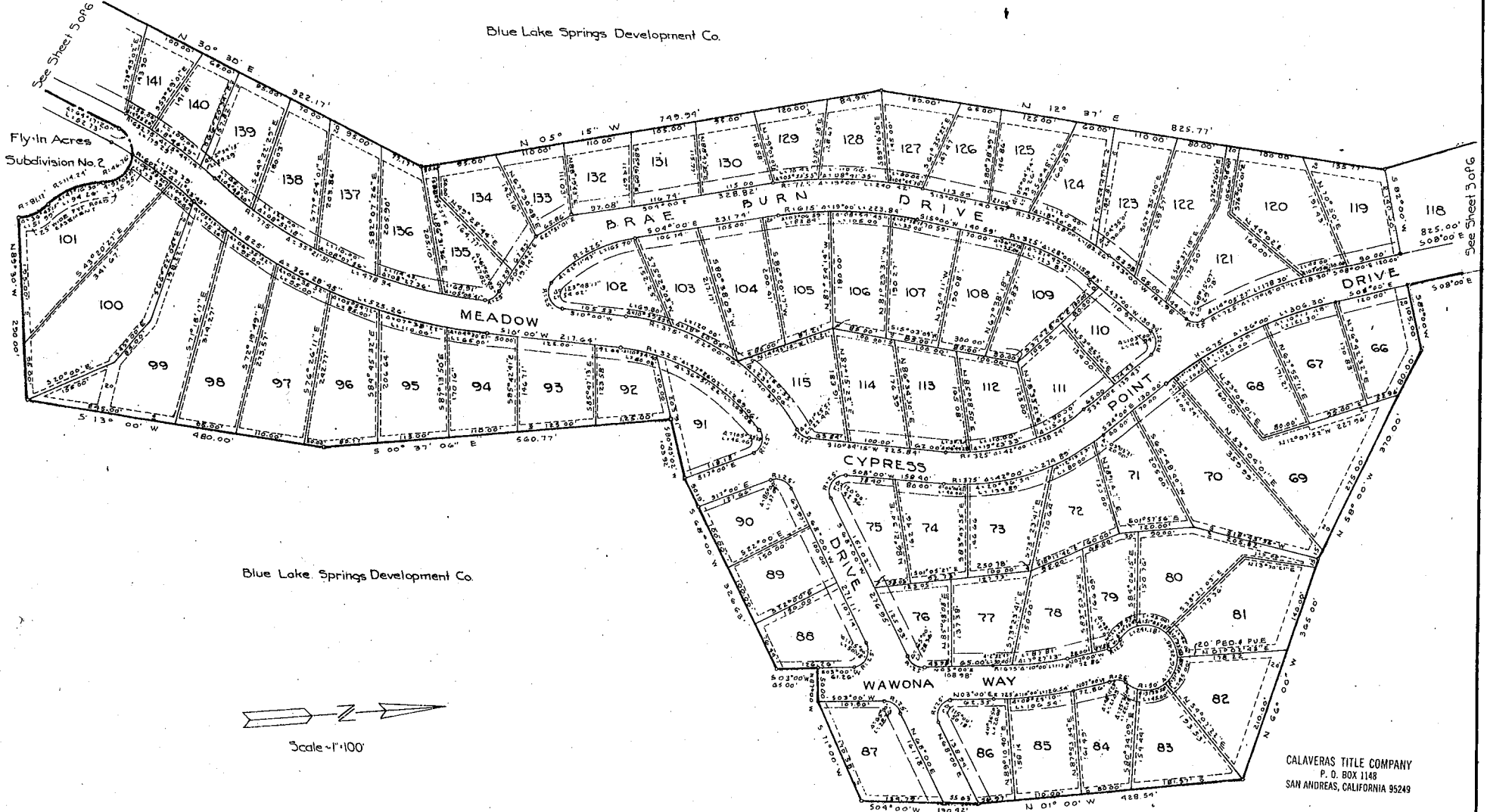
See Sheet 4 of 6

MAY 1966

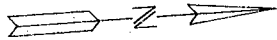
SHEET 3 OF 6

108-B

Blue Lake Springs Development Co.



Blue Lake Springs Development Co.



Scale - 1" = 100'

CALAVERAS TITLE COMPANY  
 P. O. BOX 1148  
 SAN ANDREAS, CALIFORNIA 95249

SUBDIVISION MAP OF TRACT NO. 159-B  
**BLUE LAKE SPRINGS**  
**UNIT NO. 10**

BEING PORTIONS OF SECTIONS 28 & 33, T. 5 N., R. 15 E. M.D.B. & M.  
 CALAVERAS COUNTY, CALIFORNIA

ALFRED J. ROBERTS, R.C.E. 10,892

MARC-LAND, INC.

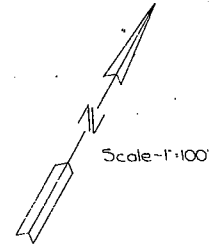
HAYWARD, CALIFORNIA

MAY 1966

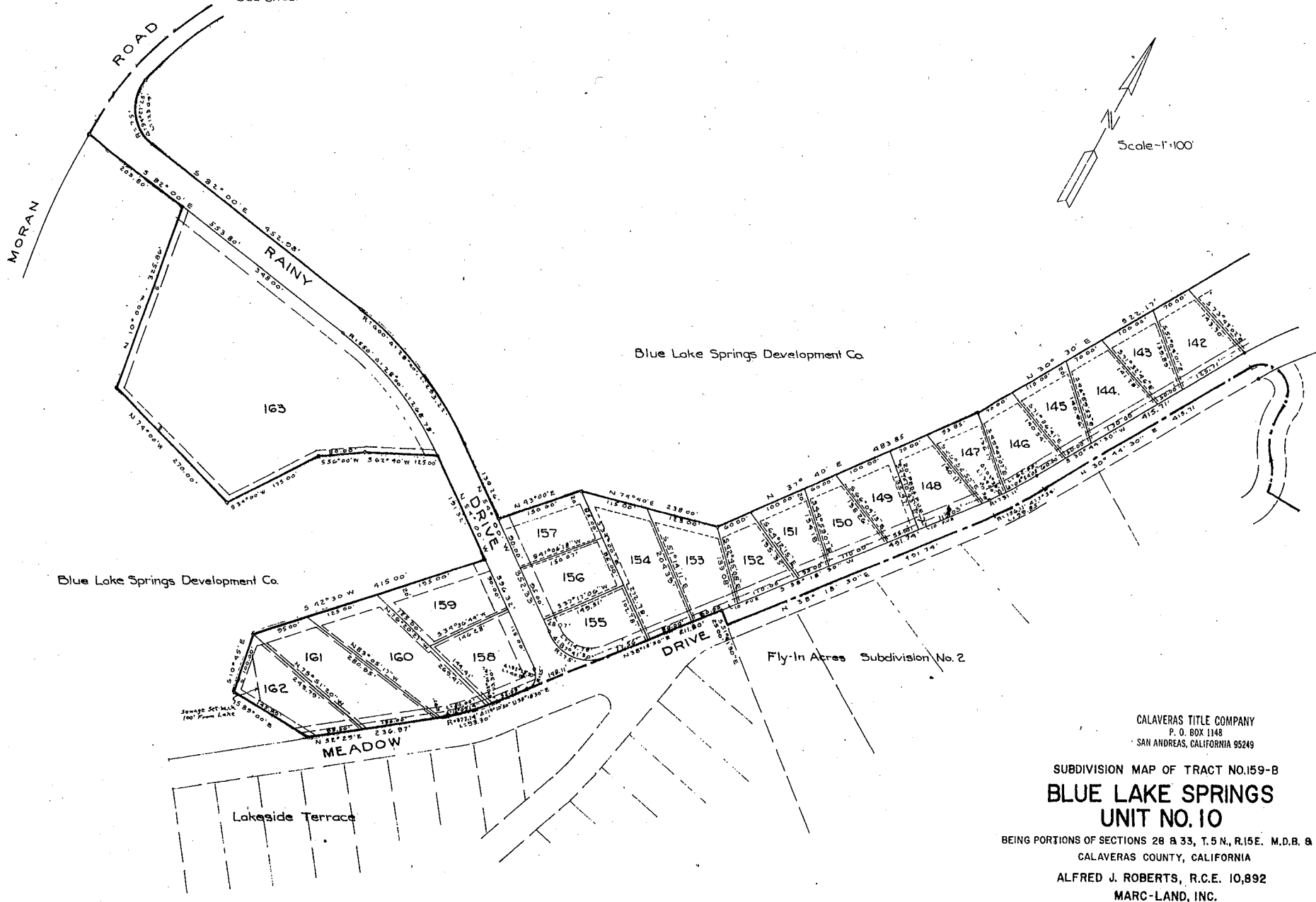
SHEET 4 OF 6

108-C

See Sheet 6 of 6



Scale-1"=100'



Blue Lake Springs Development Co.

Blue Lake Springs Development Co.

Fly-In Acres Subdivision No. 2

Lakeside Terrace

CALAVERAS TITLE COMPANY  
P. O. BOX 1148  
SAN ANDREAS, CALIFORNIA 95249

SUBDIVISION MAP OF TRACT NO. 159-B  
**BLUE LAKE SPRINGS**  
**UNIT NO. 10**

BEING PORTIONS OF SECTIONS 28 & 33, T. 5 N., R. 15 E. M. D. B. & M.  
CALAVERAS COUNTY, CALIFORNIA

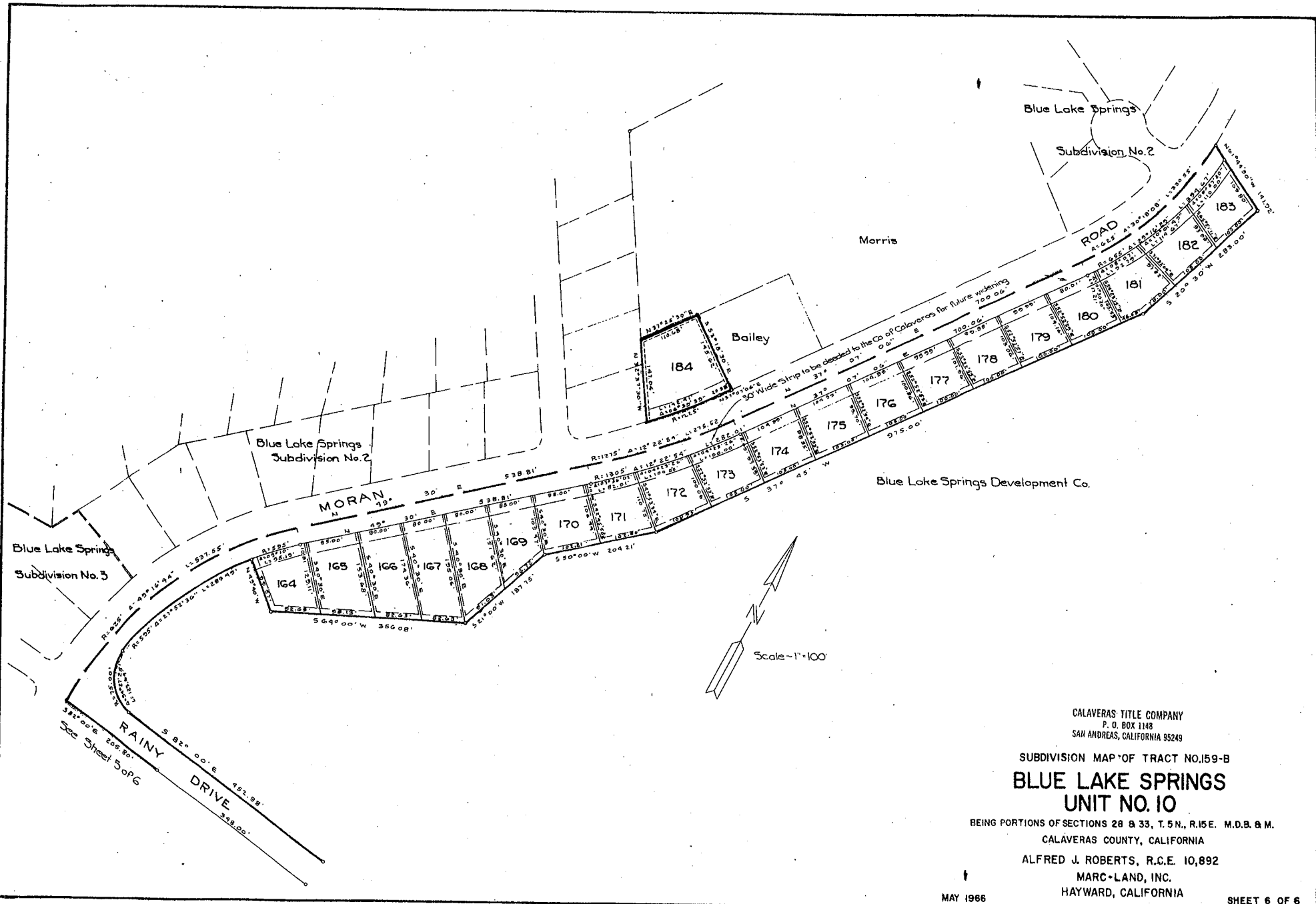
ALFRED J. ROBERTS, R.C.E. 10,892  
MARC-LAND, INC.  
HAYWARD, CALIFORNIA

MAY 1966

SHEET 5 OF 6

See Sheet 4 of 6

108-D



CALAVERAS TITLE COMPANY  
P. O. BOX 1148  
SAN ANDREAS, CALIFORNIA 95249

SUBDIVISION MAP OF TRACT NO. 159-B  
**BLUE LAKE SPRINGS**  
**UNIT NO. 10**

BEING PORTIONS OF SECTIONS 28 & 33, T.5N., R.15E. M.D.B. & M.  
CALAVERAS COUNTY, CALIFORNIA

ALFRED J. ROBERTS, R.C.E. 10,892  
MARC-LAND, INC.  
HAYWARD, CALIFORNIA

MAY 1966

SHEET 6 OF 6

108-E