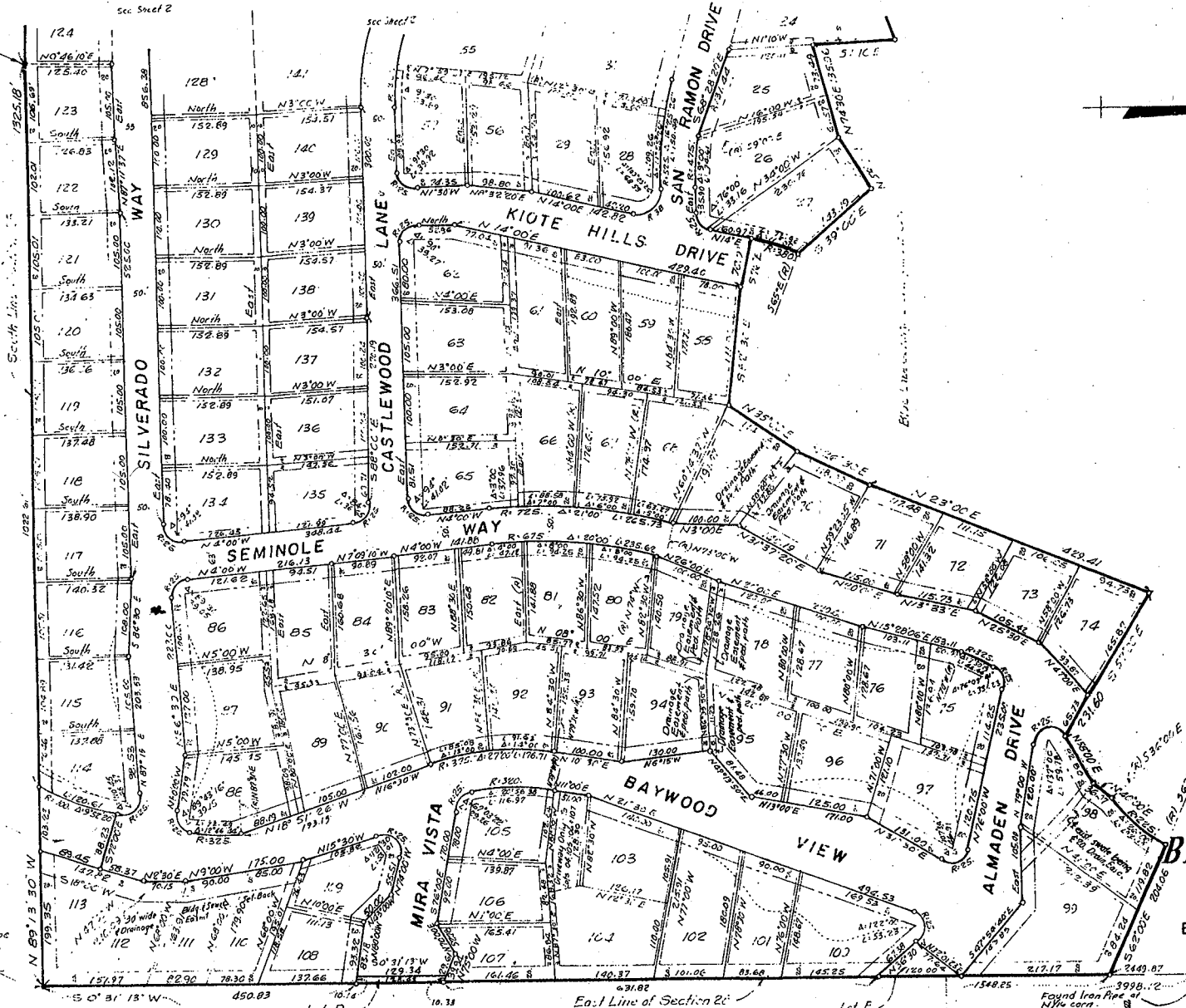


Found 3rd post
scribed "4 1/2"
at E. line Corr.

See Sheet 2

See Sheet 2

See Sheet 2



SUBDIVISION MAP OF
TRACT NO. 163

BLUE LAKE SPRINGS, UNIT NO. 11

BEING A PORTION OF SECTION 28,
T. 5 N., R. 15 E., M.L.E. 4 N.
CALAVERA'S COUNTY, CALIFORNIA

SCALE 1"=100' SEPTEMBER, 1968

WILLIAMS-ACKINS, INC.
CONSULTING CIVIL ENGINEERS
HAYWARD, CALIFORNIA

Mary Walden Smith
Book 122 C.R. page 93
C.C.R.

Found 4x4 post
Scribed "1/4 Co."
at S.W. corner.

52.5
52.5

1924.58

174.89



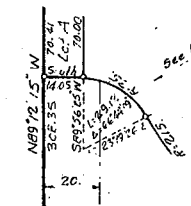
Blue Lake Springs Unit No. 10

NOTE:

1. Lots A, B, C, D, & E are reserved for future streets and are not a part of the offer for dedication.
2. A general easement for the purpose of road maintenance, not shown on this map, extends 5 feet back of the tops of cuts and the bottoms of fills on all roads within this subdivision which are not covered by dedicated rights of way.
3. (R) denotes radial bearing.

Blue Lake Springs Development Co.

Note: Building & Storage 6ft. back line as set back measured from the northern line of lots 20-24



DETAIL LOT 157

No scale

Found 4x4 Post
Scribed "1/4 Co."
at E.W. corner.

52.5
52.5

1925.18

120.11

SUBDIVISION MAP OF
TRACT NO. 163

**BLUE LAKE SPRINGS,
UNIT NO. 11**

BEING A PORTION OF SECTION 28,
T. 5 N., R. 15 E., M.D.B. & M.
CALAVERAS COUNTY, CALIFORNIA

SCALE 1"=100' SEPTEMBER, 1966

WILLIAMS-ADKINS, INC.
CONSULTING CIVIL ENGINEERS
HAYWARD, CALIFORNIA

2-109-A