

- NOTES:**
1. 20' setback from streets unless otherwise noted.
 2. 10' wide easements for public utilities any 5' on either side of lot line shown thus.
 3. 20' wide easement for public utilities and storm drainage pipes being 10' on either side of lot line or centerline shown thus.
 4. This subdivision contains 30,495 sq. ft. and lot 11 is reserved for a well site.

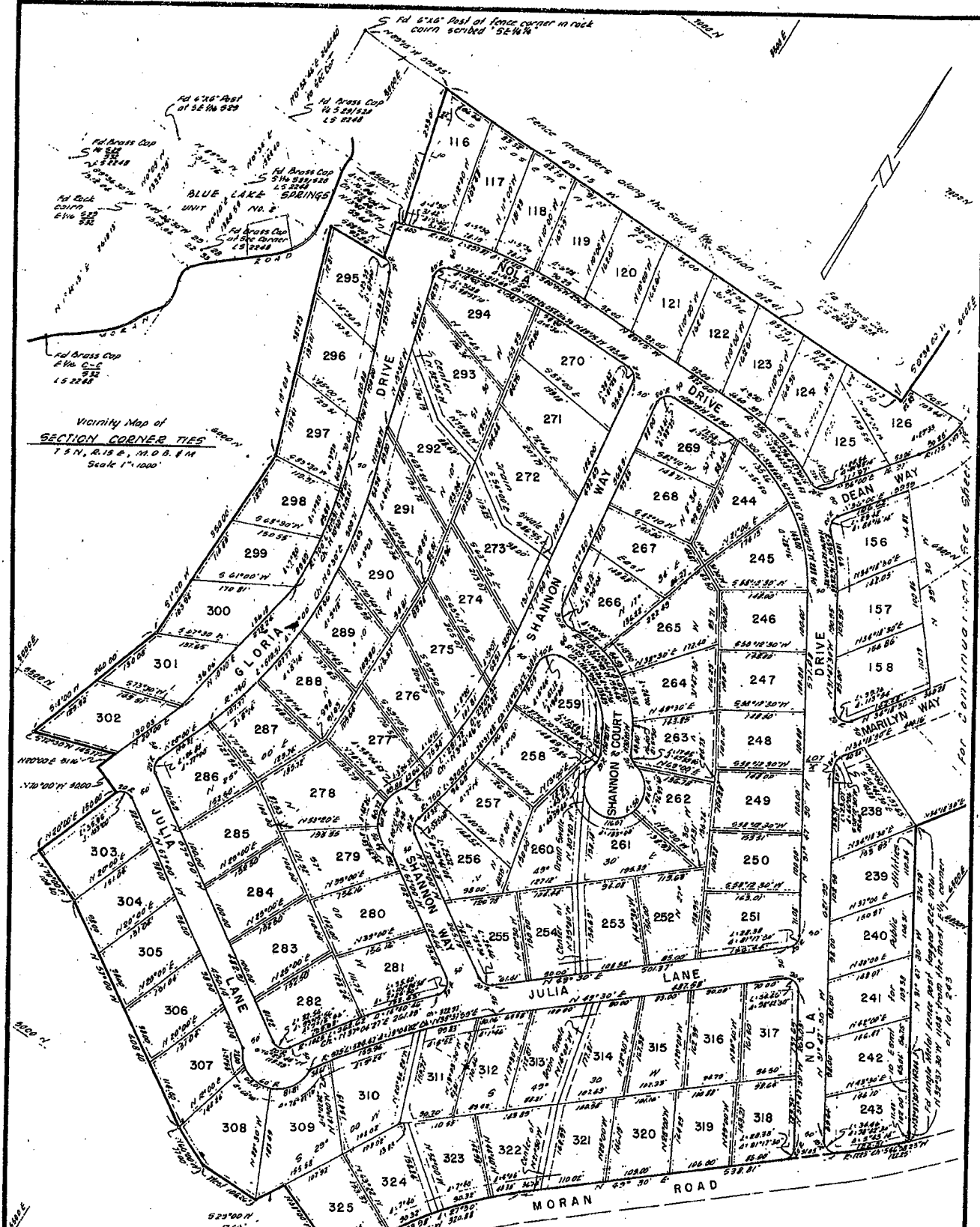
Not a Part of this Subdivision
 Refer to Record of Survey Map filed in Book 3 of Record of Surveys, Page 132, Calaveras County Records

BASE OF BEARING:
 The south line of Blue Lake Springs Unit No. 1 bears due East as shown upon that certain map filed in Map Book No. 2, Sept. 4, 1962, Calaveras County Records.

MONUMENTS SET:
 Iron Pins, 3/4" diameter, 30" long with brass tag attached stamped RCE 1183 shown thus:
 All lot corners and angle points on lot lines set with 1/2" iron pin, 24" long unless otherwise noted as above.

SUBDIVISION MAP OF
BLUE LAKE SPRINGS,
UNIT NO. 2
 BEING A PORTION OF SECTIONS 28, 29, 22 & 23
 T. 5 N., R. 15 E., M. D. B. & M.
 CALAVERAS COUNTY, CALIFORNIA
 SCALE: 1"=100'

R. W. SIEGFRIED & ASSOCIATES CIVIL ENGINEERS
 STOCKTON, CALIFORNIA APRIL, 1963
 SHEET NO. 2 OF 3 SHEETS



SUBDIVISION MAP OF
BLUE LAKE SPRINGS,
UNIT NO. 2

BEING A PORTION OF SECTIONS 28, 29, 22 & 23
 T. 5 N., R. 15 E., M. D. B. & M.

CALAVERAS COUNTY, CALIFORNIA
 SCALE: 1"=100'

R.W. SIEGFRIED & ASSOCIATES CIVIL ENGINEERS
 STOCKTON, CALIFORNIA APRIL, 1963