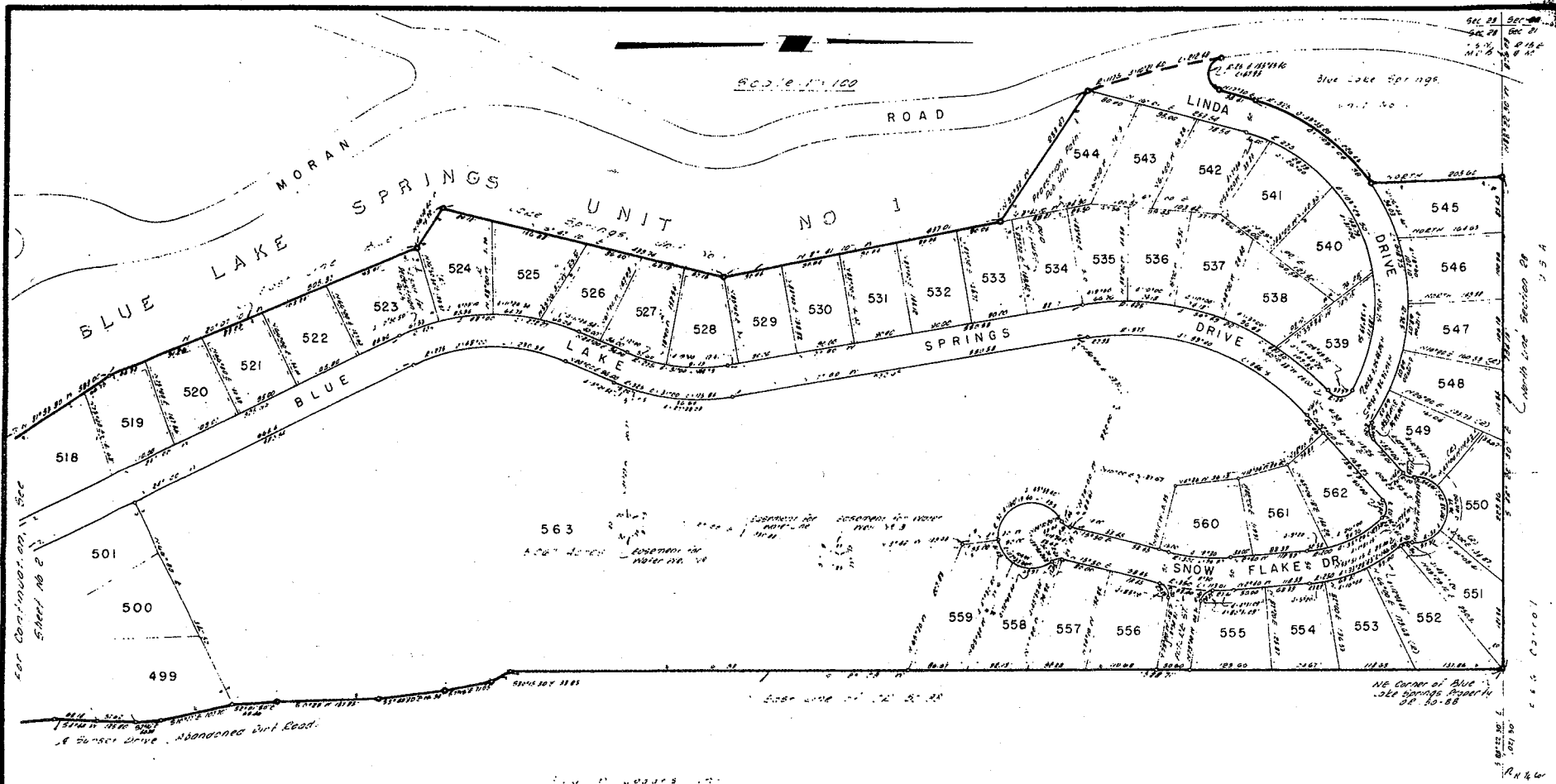


**NOTES**

1. Set back from streets are 20' in front and 10' on side unless otherwise noted
2. Easements for Public Utilities are shown thus and are 5' on either side of the line unless otherwise noted
3. Monuments found are a 3/4" iron pin, shown thus
4. Monuments set are a 3/4" iron pin 30" long with brass top attached and stamped S.C. #183, shown thus:
5. Basis of Bearing is identical to that of Blue Lake Springs, Unit No. 3
6. This subdivision contains 32.435 Acres
7. All lot corners and angle points on lot lines set with 1/4" x 1000 pin, 24" long unless otherwise noted as above in note 1 & 4

SUBDIVISION MAP OF  
TRACT NO. 126  
**BLUE LAKE SPRINGS,  
UNIT NO. 4**  
PORTION OF SECTION 28, T.5N., R.15E., M.D.B. & M.,  
CALAVERAS COUNTY, CALIFORNIA

R. W. SIEGFRIED & ASSOCIATES    CIVIL ENGINEERS  
STOCKTON, CALIFORNIA                      APRIL, 1964



SUBDIVISION MAP OF  
TRACT NO 126  
**BLUE LAKE SPRINGS,  
UNIT NO. 4**

PORTION OF SECTION 28, T.5N, R.15E, M.D.B & M,  
CALAVERAS COUNTY, CALIFORNIA

R W SIEGFRIED & ASSOCIATES CIVIL ENGINEERS  
STOCKTON, CALIFORNIA APRIL, 1964