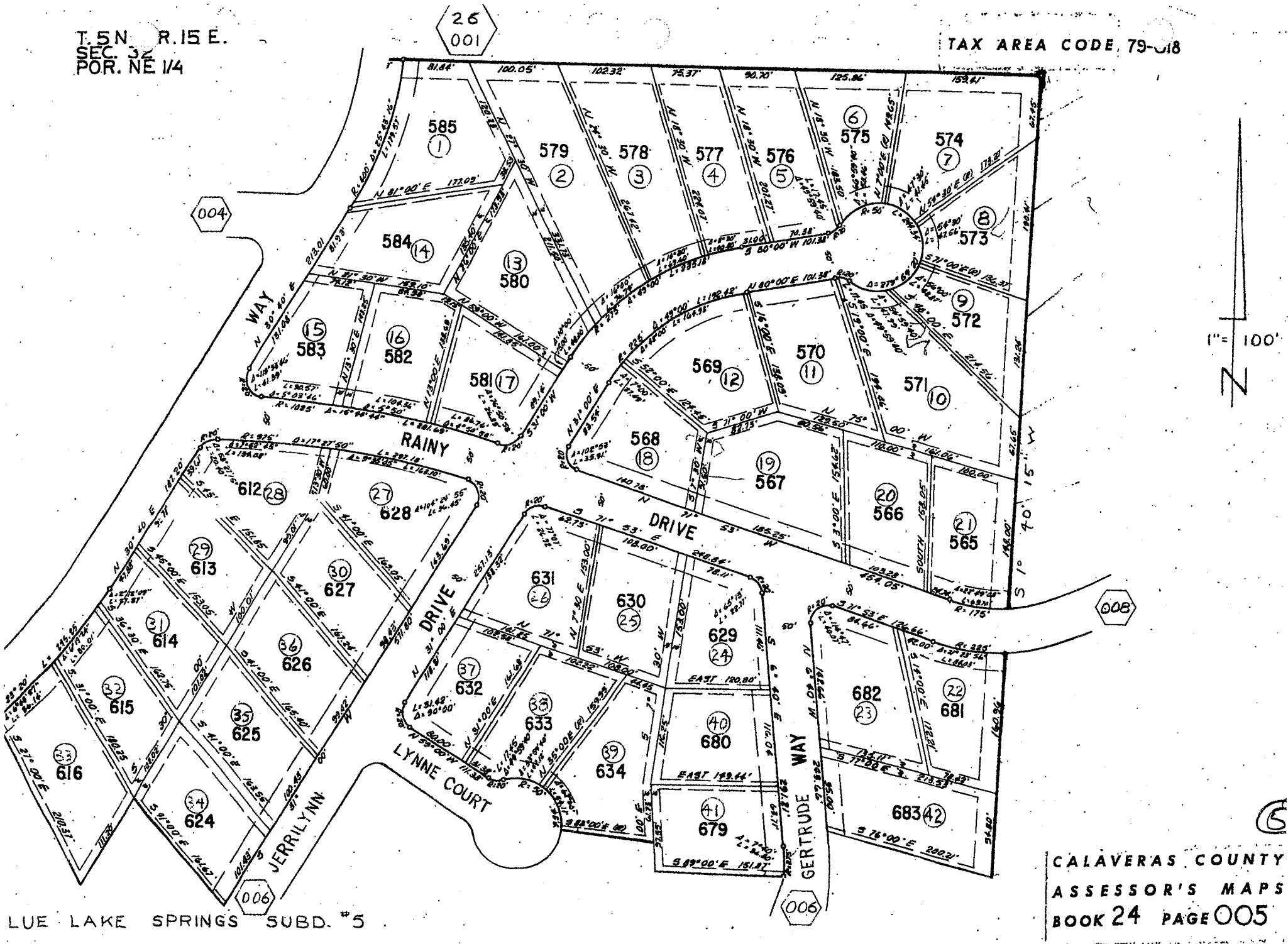


T. 5 N. R. 15 E.
SEC. 32
POR. NE 1/4

TAX AREA CODE 79-018



1" = 100'
N

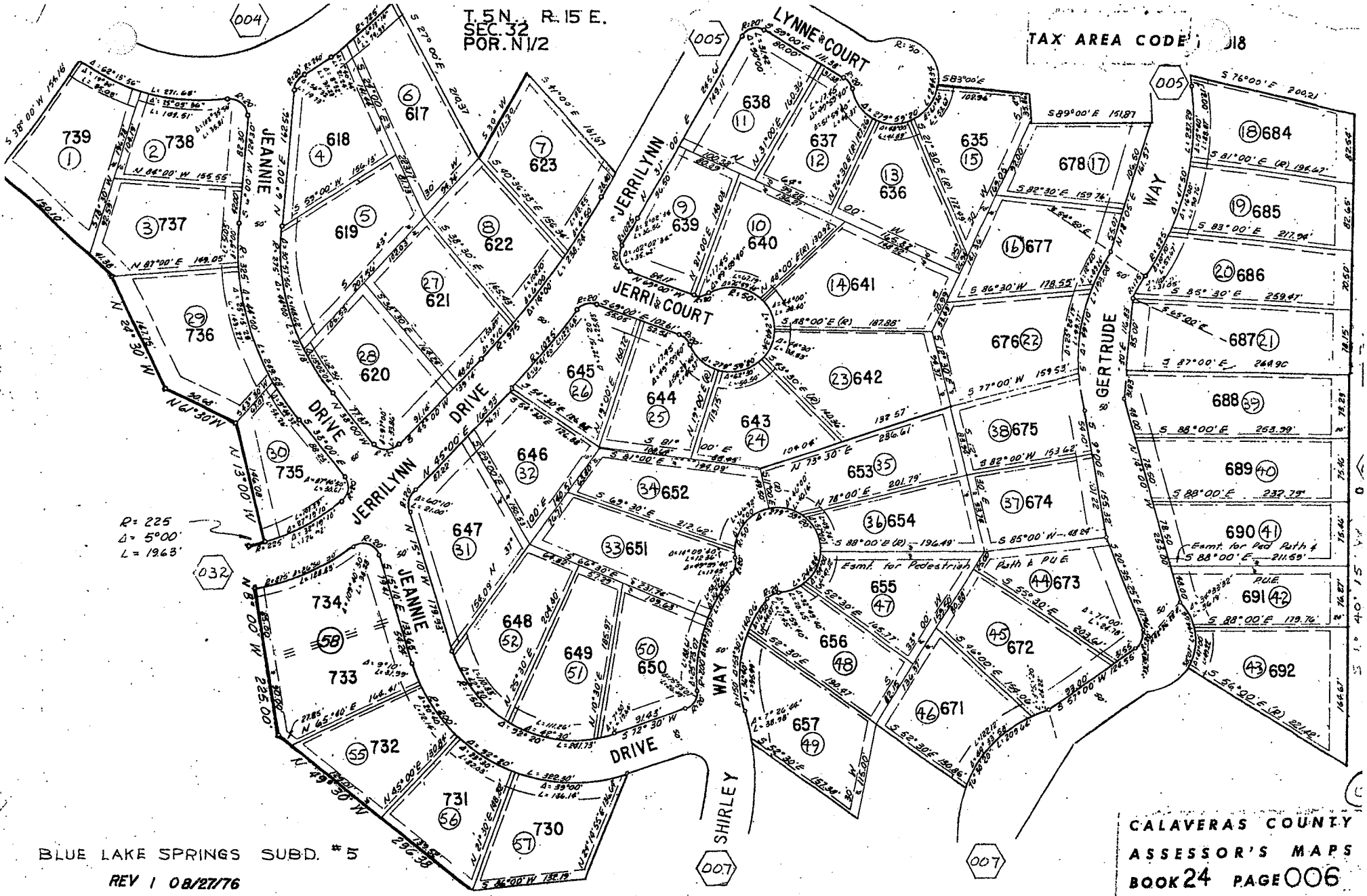
CALAVERAS COUNTY
ASSESSOR'S MAPS
BOOK 24 PAGE 005

LUE LAKE SPRINGS SUBD. #5

004

T. 5 N., R. 15 E.
SEC. 32
POR. N1/2

TAX AREA CODE 018

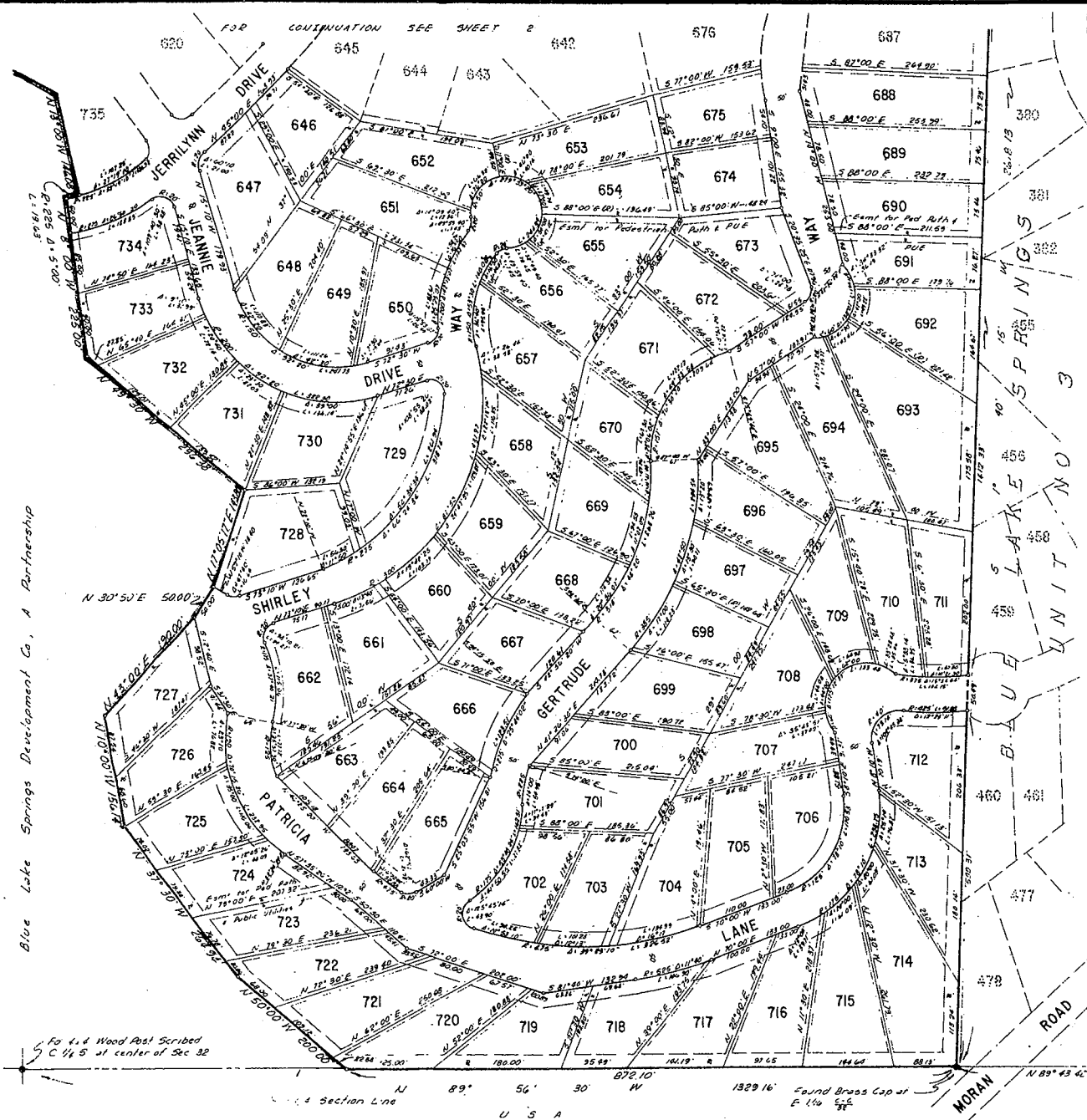


$R = 225$
 $\Delta = 5^{\circ}00'$
 $L = 196.3'$

BLUE LAKE SPRINGS SUBD. # 5
 REV 1 08/27/76

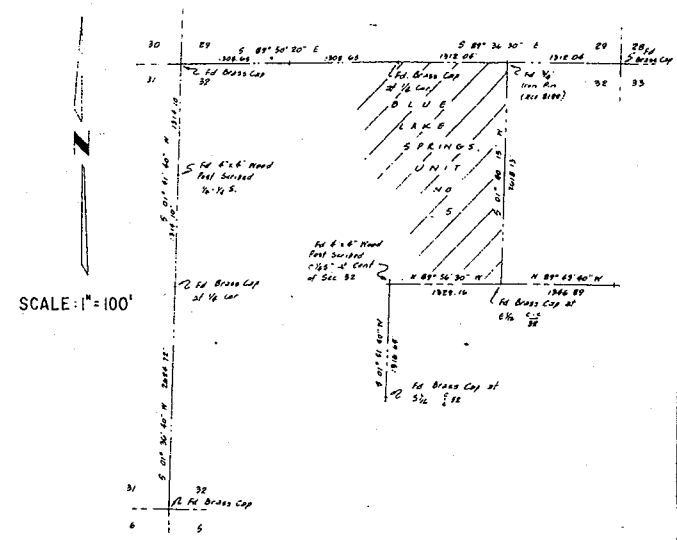
CALAVERAS COUNTY
 ASSESSOR'S MAPS
 BOOK 24 PAGE 006

Blue Lake Springs Development Co., A Partnership



NOTES

- 1 Set-back from streets are 20 in front and 10 on side unless otherwise noted
- 2 Easements for Public Utilities are shown thus and are 5' on either side of lot line unless otherwise noted
- 3 Monuments found are as noted and shown thus
- 4 Monuments set are 2 3/4" iron pin, 36 long with brass tag attached and stamped "L S 8113", shown thus
- 5 BASIS OF BEARING - The east line of this unit being the west line of Blue Lake Springs Unit No 3, as filed for record in MSP Book 122 on November 18, 1963
- 6 This subdivision contains 82.154 Acres.
- 7 All lot corners and angle points on lot lines set with 1/2" iron pins, 24" long unless otherwise noted as above in Note 4



SUBDIVISION MAP OF
TRACT NO. 130
BLUE LAKE SPRINGS,
UNIT NO. 5

PORTION OF SECTION 32, T5N., R15E., M.D.B. & M.,
CALAVERAS COUNTY, CALIFORNIA

TRANS-SIERRA CO. LICENSED LAND SURVEYORS
ARNOLD, CALIFORNIA AUGUST, 1964