

SUBDIVISION MAP OF  
TRACT NO. 132  
**BLUE LAKE SPRINGS,  
UNIT NO. 7**

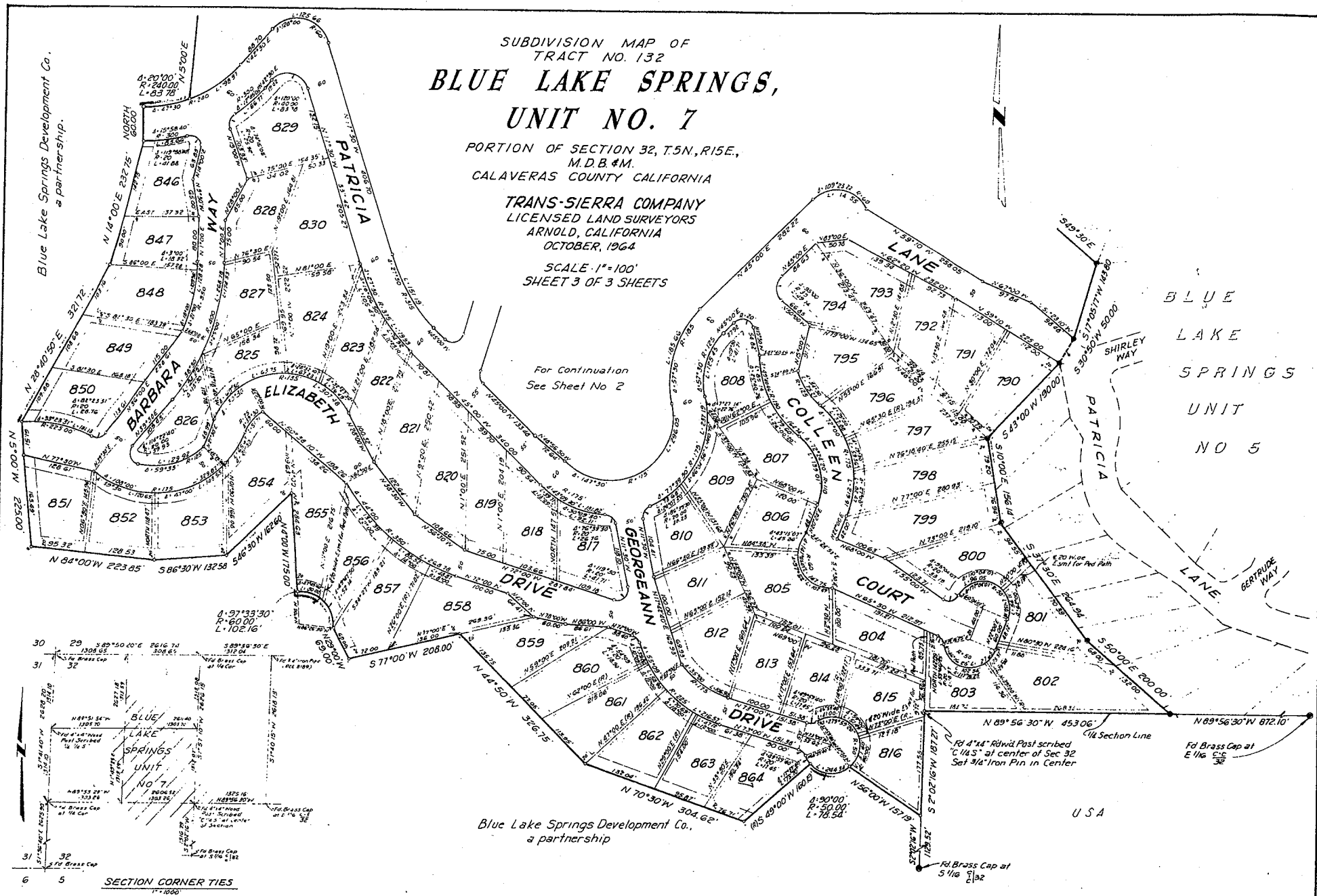
PORTION OF SECTION 32, T.5N., R.15E.,  
M.D.B.#M.  
CALAVERAS COUNTY CALIFORNIA

**TRANS-SIERRA COMPANY**  
LICENSED LAND SURVEYORS  
ARNOLD, CALIFORNIA  
OCTOBER, 1964

SCALE 1"=100'  
SHEET 3 OF 3 SHEETS

For Continuation  
See Sheet No 2

Blue Lake Springs Development Co.,  
a partnership



SECTION CORNER TIES

USA

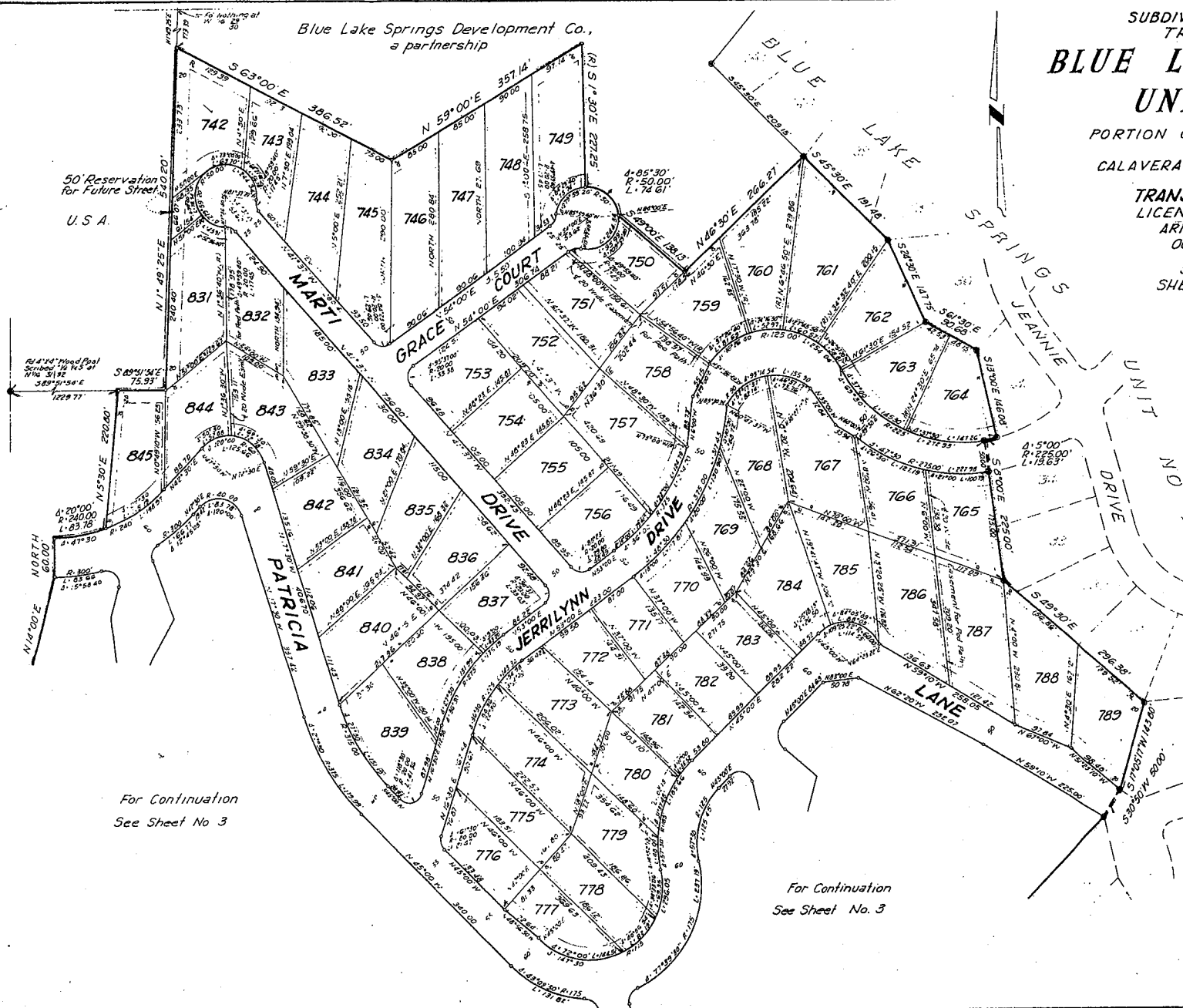
Blue Lake Springs Development Co.,  
a partnership

SUBDIVISION MAP OF  
TRACT NO. 132  
**BLUE LAKE SPRINGS,  
UNIT NO. 7**

PORTION OF SECTION 32, T.5N., R.15E.,  
M.D.B. & M.  
CALAVERAS COUNTY CALIFORNIA

**TRANS-SIERRA COMPANY**  
LICENSED LAND SURVEYORS  
ARNOLD, CALIFORNIA  
OCTOBER, 1964

SCALE 1"=100'  
SHEET 2 OF 3 SHEETS



**NOTES**

1. Set back from streets are 20' in front and 10' on side unless otherwise noted.
2. Easements for Public Utilities are shown thus and are 5' on each side of lot line unless otherwise noted.
3. Monuments found are as noted and shown thus and are 3/4" dia. Iron pins tagged "LS 3113" unless otherwise noted.
4. Basis of Bearings The east line of this unit being the west line of Blue Lake Springs, Unit No 5 as filed for record in Map Book 2, on September 8, 1964.
5. This subdivision contains 60.212 Acres.
6. All lot corners and angle points on lot lines set with 1/2" iron pins, 24" long unless otherwise noted as below in Note No. 7.
7. Monuments set are a 3/4" Iron Pin, 30" long with brass tag attached and stamped "LS 3113", shown thus:
8. Total Number of Lots = 123

For Continuation  
See Sheet No 3

For Continuation  
See Sheet No. 3